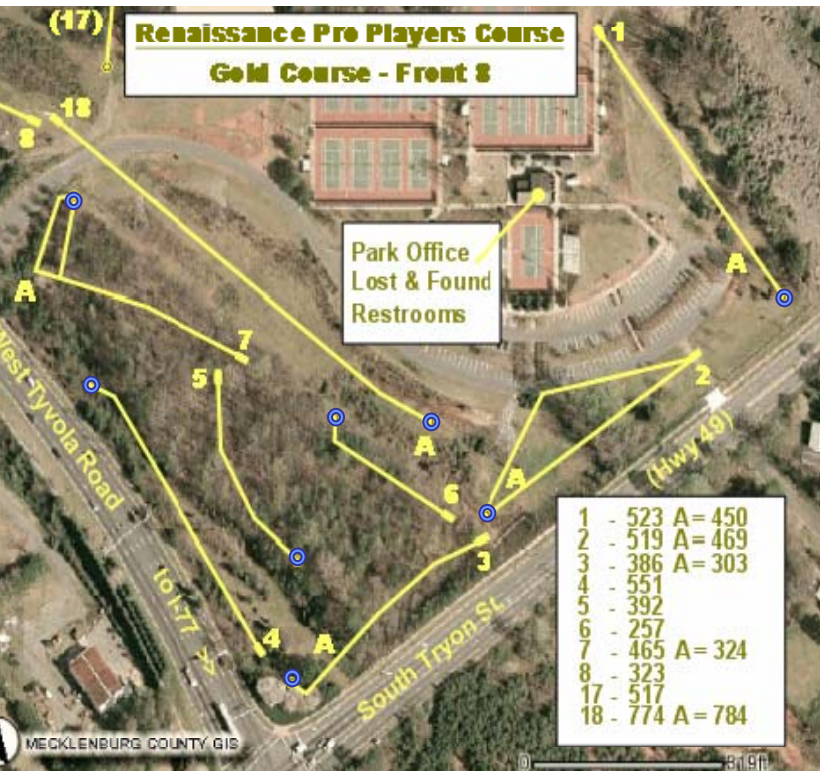


Out of Bounds and Special Conditions

Renny Gold

2 Meter Rule is NOT in effect.



1. Sidewalk and asphalt (and across) are OB.
2. No Mando. On right, asphalt and across is OB. On left, sidewalk and across is OB. The pit to the right of the green is staked off. Inside the circle is OB.
3. No special conditions.
4. On the left side of the fairway, OB line is just into the woods. On last third of fairway on right OB is marked in creekbed.
5. Over the chainlink fence is OB. Water is casual on this hole.
6. Beyond the red stakes at the creek that flows below the green is OB.
7. Mando! Tree on right near the tee pad. Re-tee if you miss it (drop zone is the tee pad). OB lines both sides of the fairway. On the left side, the creek/water is not OB – it is the red flags & stakes in the creekbed that create OB line. On the right, red flags & stakes create the OB line. At the green, red flags are OB and asphalt & beyond is OB.
18. On left, on or across asphalt is OB. Water in bottom of creek on right is casual. The red OB stakes down the right hand side of the fairway are NOT in play for hole 18. There is a “pond” of OB in the ditch at the end of the grass on the fairway. The pit between the green of 18 and basket for Gold hole 2 is OB.



8. Past red flags is OB (swamp).
9. In or across creek is OB.
10. OB lines the right of the entire fairway and circles around the green.
11. OB lines both sides of the fairway and around the green. On left, red stakes & flags are on the roadside edge of the long grass.
12. On right, OB lines the fairway all the way to the asphalt. On left and past the green asphalt & beyond is OB.
13. On right, OB lines the fairway.
14. OB lines the right side of the last half of the fairway.
15. No special conditions.
16. No special conditions. Water is casual on left fairway.
17. Mando! Tree with sign on right just before creek. Drop zone is to the left of the mando tree on the rubber mat. Water is casual.